



**FULL YEAR AND
FOURTH QUARTER
2009 RESULTS**

Milan – February 8th, 2010

AGENDA

■ **Business environment**

■ **Fourth quarter and full year 2009 results:**

- Electric power and hydrocarbons sources and uses
- Consolidated financial highlights
- Operating performance
- Capital expenditures
- Net financial position and cash flow

■ **Dividends**

MARKET REFERENCE SCENARIO 1/2

| | 9m 09 | 9m 08 | Δ | 4Q 09 | 4Q 08 | Δ | FY 09 | FY 08 | Δ |
|-------------------------------------|--------------|-------|-------|--------------|-------|-------|--------------|-------|-------|
| ICE Brent swap (\$/bbl) | 58.2 | 112.1 | (48%) | 75.6 | 57.3 | 32% | 62.6 | 98.4 | (36%) |
| Exchange rate (€/\$) | 1.36 | 1.52 | (10%) | 1.48 | 1.32 | 12% | 1.39 | 1.47 | (5%) |
| ICE Brent swap (€/bbl) | 42.6 | 73.7 | (42%) | 51.2 | 43.5 | 18% | 44.9 | 66.9 | (33%) |
| Gas Release 2 * (€/000 scm) | 273.1 | 309.2 | (12%) | 221.5 | 412.5 | (46%) | 260.2 | 335.1 | (22%) |
| Gas CCI (€/000 scm) ** | 301.2 | 301.6 | 0% | 226.0 | 366.6 | (38%) | 282.4 | 317.9 | (11%) |
| PUN _{TWA} (€/MWh) | 66.2 | 85.8 | (23%) | 56.3 | 90.5 | (38%) | 63.8 | 87.0 | (27%) |
| PUN F1 (€/MWh) | 87.2 | 114.1 | (24%) | 73.4 | 115.5 | (36%) | 83.8 | 114.5 | (27%) |
| PUN F2-F3 (€/MWh) | 56.4 | 72.3 | (22%) | 48.7 | 79.5 | (39%) | 54.3 | 74.0 | (27%) |
| Spark Spread _{TWA} (€/MWh) | 13.2 | 23.4 | (43%) | 10.3 | 8.7 | 18% | 12.5 | 19.7 | (37%) |
| Spark Spread F1 (€/MWh) | 34.2 | 51.7 | (34%) | 27.4 | 33.7 | (19%) | 32.5 | 47.2 | (31%) |
| Spark Spread F2-F3 (€/MWh) | 3.4 | 10.0 | (66%) | 2.7 | (2.3) | n.s. | 3.1 | 6.8 | (55%) |
| CO ₂ (€/ton) | 13.2 | 23.9 | (45%) | 13.8 | 17.8 | (23%) | 13.3 | 22.3 | (40%) |

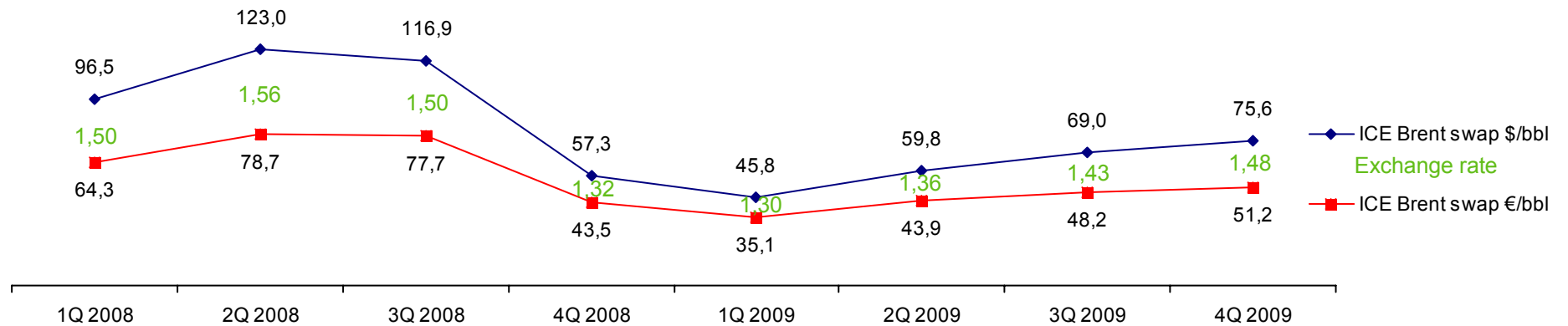
* At PSV of Snam Rete Gas

** At the border, D. 134/06 AEEG updated according to D.192/08, D.40/09 and D. 64/09.

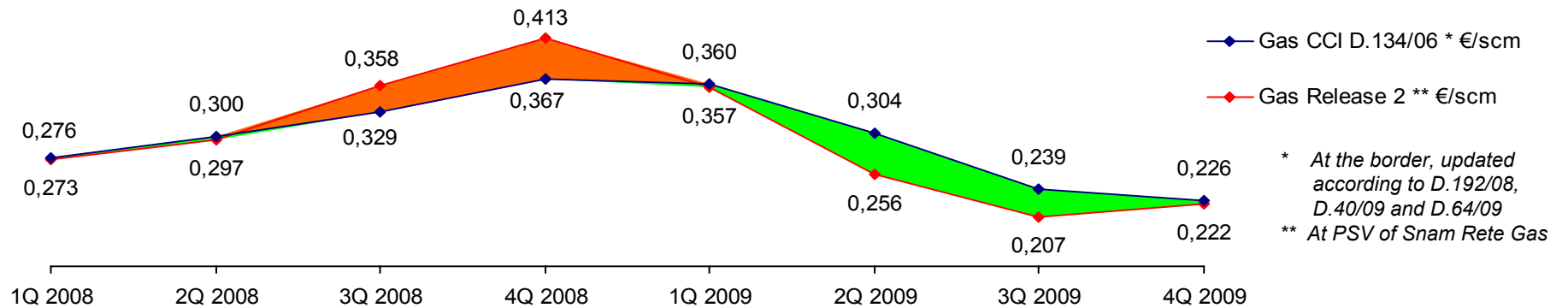
Source: Edison

MARKET REFERENCE SCENARIO 2/2

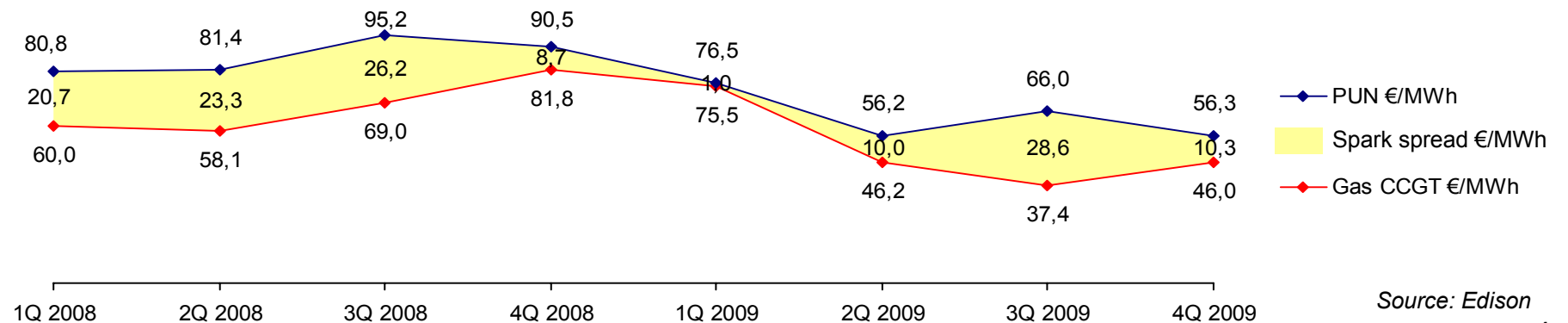
Oil and Exchange rate



Residential gas market



Electricity market



ELECTRIC POWER AVAILABILITY MIX AND GAS DEMAND IN ITALY

Electricity supply mix ^{a)} (TWh)

| | 9m 09 | 9m 08 | Δ | 4Q 09 | 4Q 08 | Δ | FY 09 | FY 08 | Δ |
|-----------------------------|--------------|-------|---------|--------------|-------|---------|---------------|--------|----------------------|
| Thermoelectric production | 164.2 | 197.6 | (16.9%) | 61.8 | 63.7 | (3.0%) | 226.0 | 261.3 | (13.5%) |
| Hydroelectric production | 42.6 | 36.2 | 17.6% | 9.2 | 11.0 | (16.7%) | 51.7 | 47.2 | 9.6% |
| Other renewable production | 8.0 | 7.9 | 0.7% | 3.5 | 2.6 | 30.5% | 11.4 | 10.6 | 8.1% |
| Auxiliary services of prod. | (8.2) | (9.1) | (9.4%) | (2.8) | (3.0) | (6.0%) | (11.0) | (12.1) | (8.5%) |
| Net production | 206.5 | 232.7 | (11.2%) | 71.6 | 74.4 | (3.7%) | 278.1 | 307.1 | (9.4%) |
| Net import | 34.5 | 29.8 | 15.5% | 10.0 | 10.2 | (2.2%) | 44.4 | 40.0 | 11.0% |
| Pumping | (4.2) | (5.6) | (25.9%) | (1.6) | (2.0) | (21.8%) | (5.7) | (7.6) | (24.8%) |
| Total Sources | 236.8 | 256.9 | (7.8%) | 80.0 | 82.6 | (3.1%) | 316.9 | 339.5 | (6.7%) ^{b)} |

a) Gross of losses

b) (6.5%) on a seasonally adjusted basis

Source: Terna

Gas demand (bcm)

| | 9m 09 | 9m 08 | Δ | 4Q 09 | 4Q 08 | Δ | FY 09 | FY 08 | Δ |
|------------------------------|-------------|-------|---------|-------------|-------|--------|-------------|-------|---------|
| Services & residential users | 20.3 | 19.8 | 2.1 | 10.6 | 10.4 | 3.0% | 30.9 | 30.2 | 2.2% |
| Industrial users | 11.8 | 14.3 | (17.5%) | 5.0 | 4.4 | 13.2% | 16.8 | 18.7 | (10.1%) |
| Thermoelectric users | 20.7 | 25.8 | (19.9%) | 7.8 | 8.3 | (5.4%) | 28.5 | 34.1 | (16.2%) |
| Transport and other | 0.5 | 0.5 | n.s. | 0.1 | 0.2 | n.s. | 0.6 | 0.7 | (10.8%) |
| Auto consumptions and losses | 0.7 | 0.8 | n.s. | 0.3 | 0.2 | n.s. | 1.0 | 1.0 | (5.7%) |
| Total demand | 54.0 | 61.2 | (12.0%) | 23.8 | 23.5 | 2.0% | 77.8 | 84.7 | (8.1%) |

Source: Ministry of Economic Development, SRG and Edison estimates

AGENDA

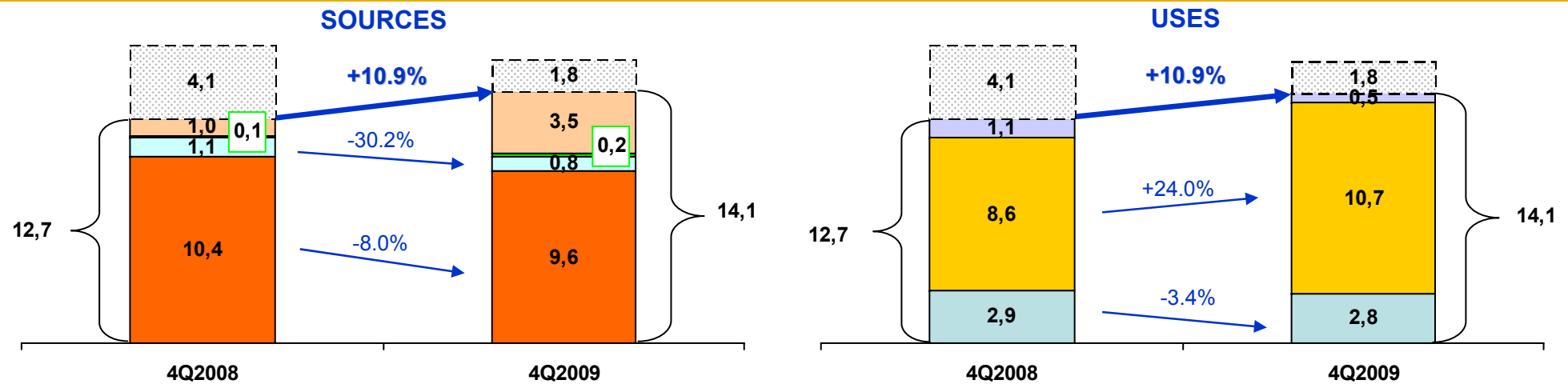
- **Business environment**

- **Fourth quarter and full year 2009 results:**
 - Electric power and hydrocarbons sources and uses
 - Consolidated financial highlights
 - Operating performance
 - Capital expenditures
 - Net financial position and cash flow

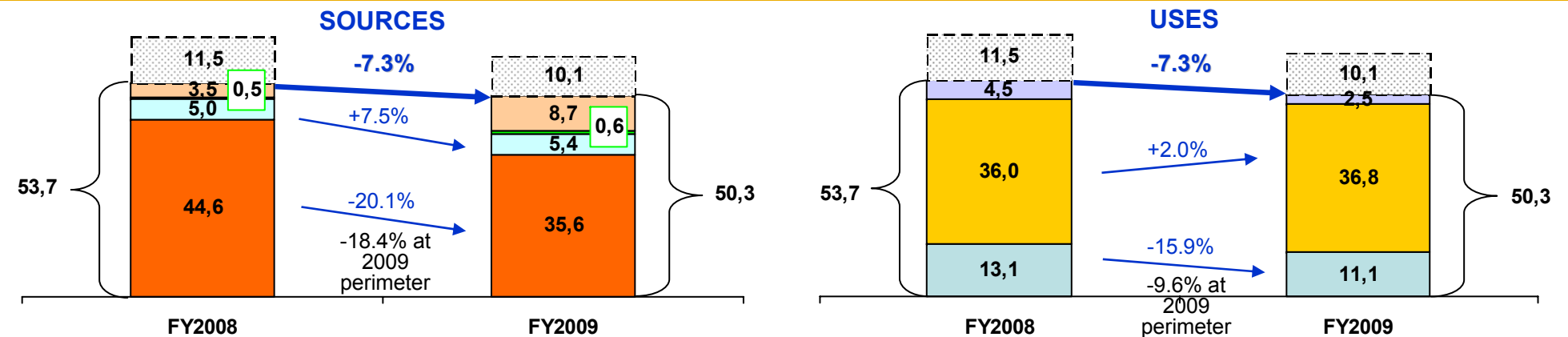
- **Dividends**

EDISON ELECTRIC POWER OPERATIONS — TOTAL SOURCES AND USES

Fourth quarter (TWh)



Full year (TWh)



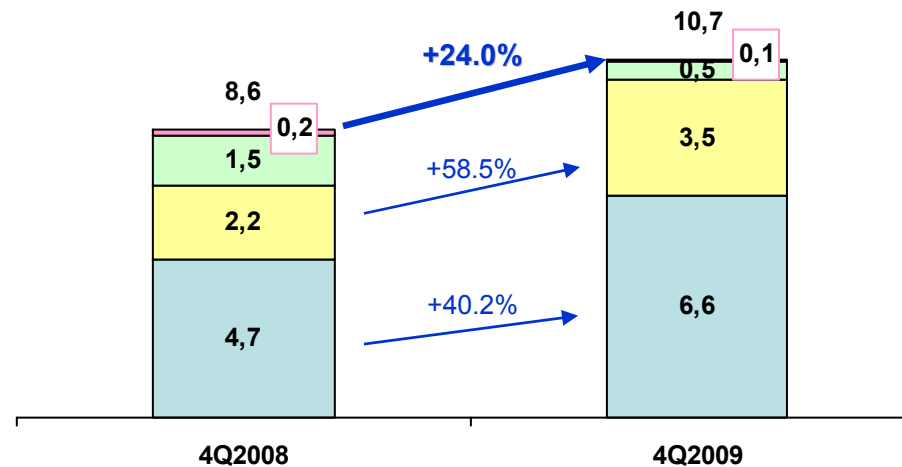
- ▨ Intermediated IPEX volumes
- ▨ Other purchases a)
- ▨ Wind production
- ▨ Hydroelectric production
- ▨ Thermoelectric production

a) Gross of losses and excluding trading portfolio

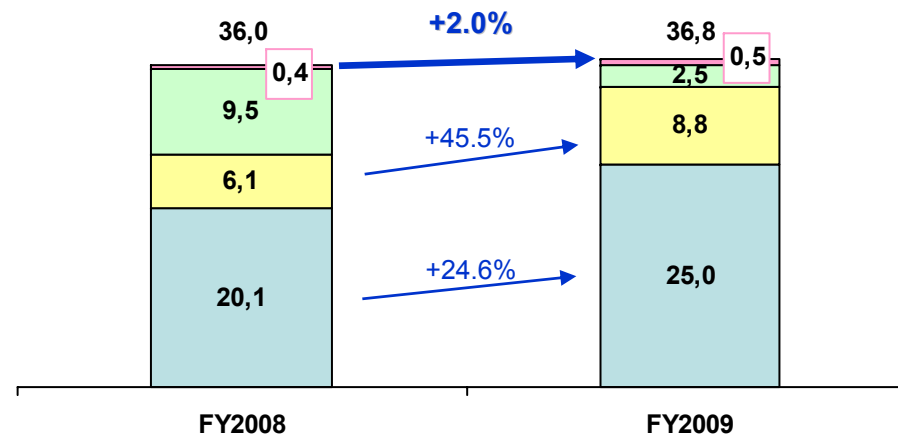
- ▨ Intermediated IPEX volumes
- ▨ Captive and other industrial customers
- ▨ Deregulated market
- ▨ CIP6

EDISON ELECTRIC POWER OPERATIONS — USES ON FREE MARKET

Fourth quarter (TWh)



Full year (TWh)



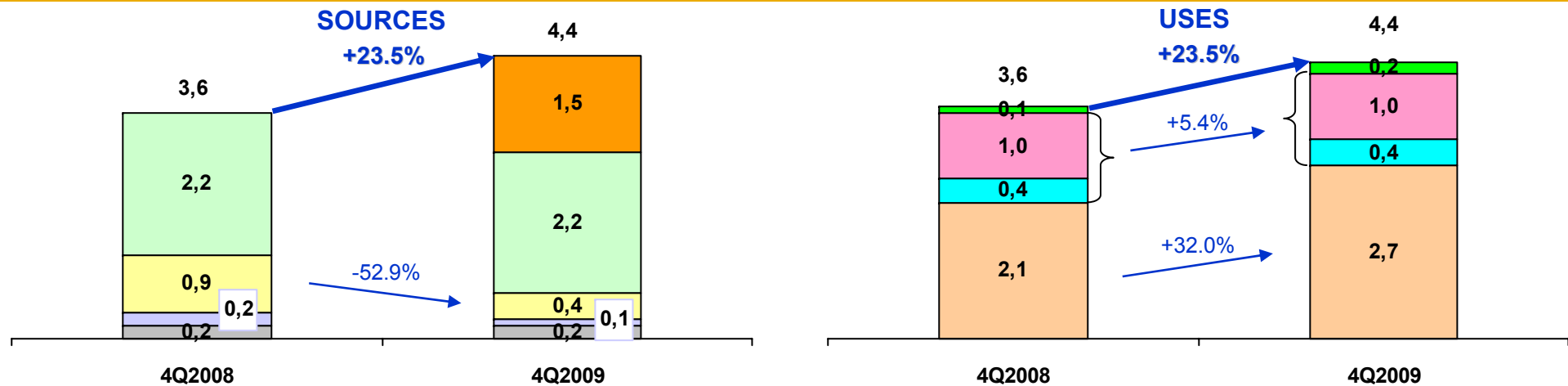
- Other sales a)
- IPEX
- Wholesalers
- Eligible customers b)

a) Excluding trading portfolio

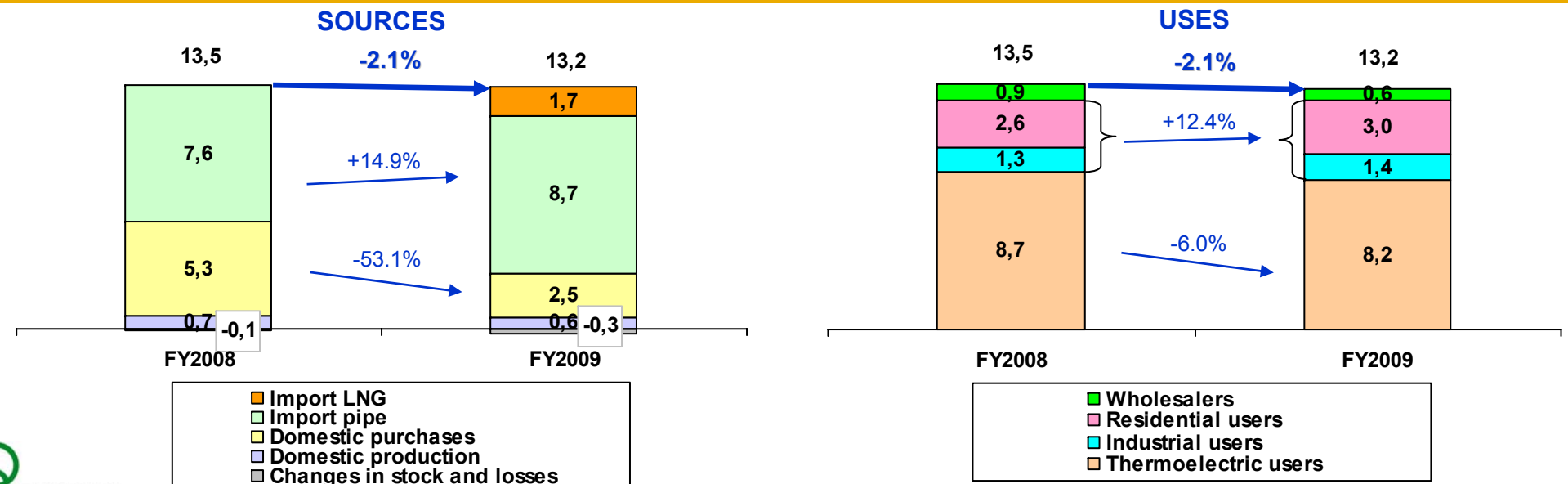
b) Gross of losses

EDISON GAS PORTFOLIO IN ITALY — SOURCES AND USES

Fourth quarter (bcm)



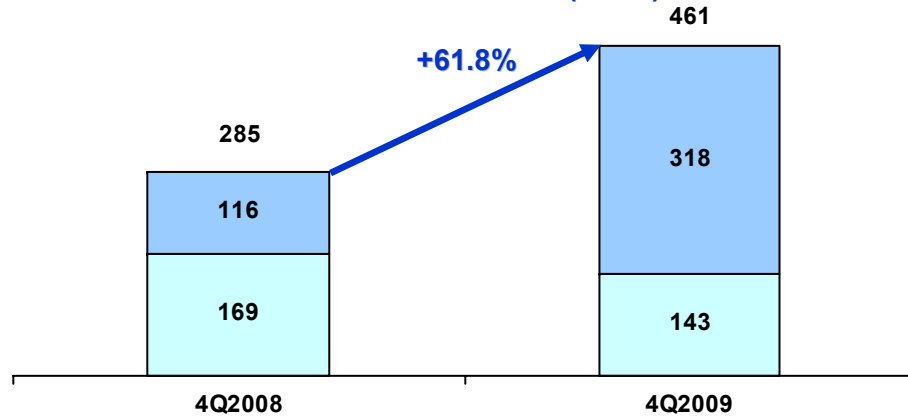
Full year (bcm)



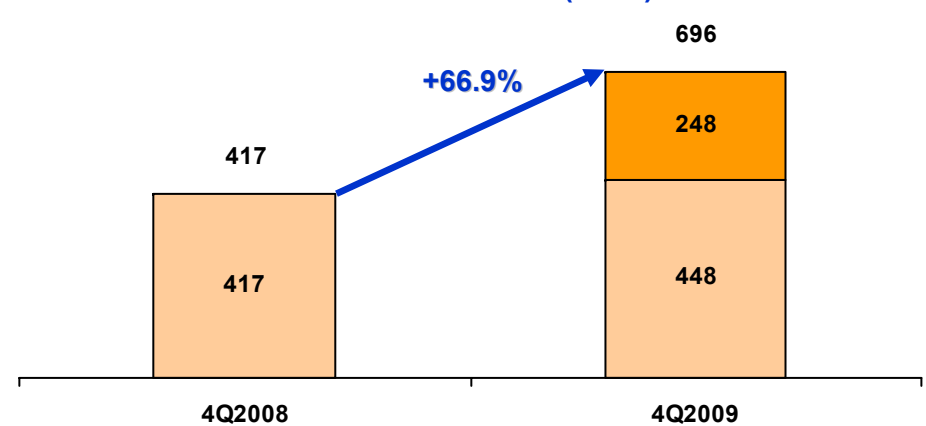
EDISON GROUP E&P OPERATIONS

Fourth quarter

GAS PRODUCTION (mcm)

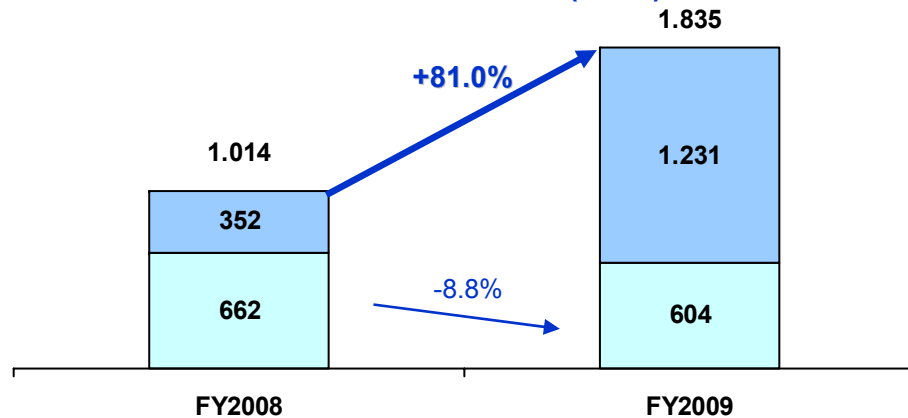


OIL PRODUCTION (Kbbl)

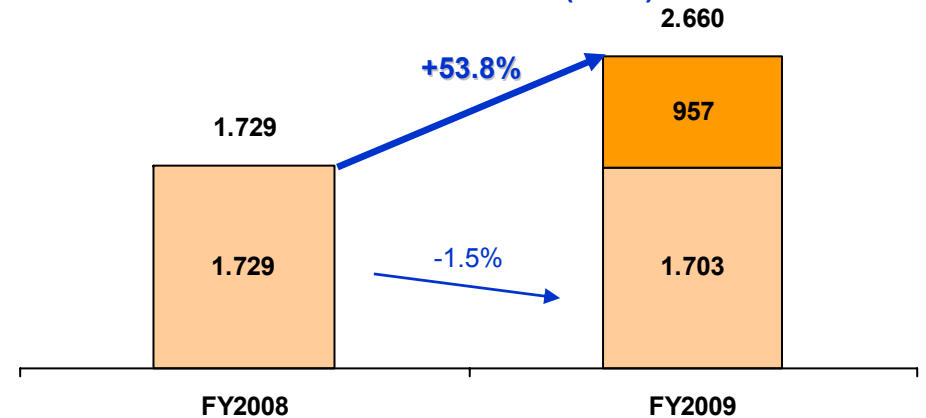


Full year

GAS PRODUCTION (mcm)



OIL PRODUCTION (Kbbl)



EDISON GROUP — CONSOLIDATED HIGHLIGHTS

| <i>Euro million</i> | 9m2009 | 9m2008 | Δ | 4Q2009 | 4Q2008 | Δ | FY2009 | FY2008 | Δ |
|--------------------------------------|---------------------------|---------------------|---------|--------------|--------|---------|---------------------------|-----------------|---------|
| Sales revenues ^{a)} | 6,501 | 7,190 | (9.6%) | 2,366 | 2,874 | (17.7%) | 8,867 | 10,064 | (11.9%) |
| EBITDA | 1,128 | 1,209 | (6.7%) | 343 | 434 | (21.0%) | 1,471 | 1,643 | (10.5%) |
| EBIT | 562 | 673 | (16.5%) | 137 | 188 | (27.1%) | 699 | 861 | (18.8%) |
| Profit before taxes | 448 | 526 | (14.8%) | 81 | 204 | (60.3%) | 529 | 730 | (27.5%) |
| Group net income | 203 | 219 | (7.3%) | 37 | 127 | (70.9%) | 240 | 346 | (30.6%) |
| Total CAPEX | 1,527^{b)} | 379 | | 218 | 265 | | 1,745^{b)} | 644 | |
| Employees | 3,897 | 2,943 ^{c)} | | | | | 3,923 | 2,961 | |
| | 30.09.09 | 30.09.08 | | | | | 31.12.09 | 31.12.08 | |
| Net Invested Capital | 12,381 | 10,896 | | | | | 12,112 | 10,993 | |
| Net Financial Debt | 4,222 | 2,821 | | | | | 3,858 | 2,920 | |
| Stockholders' equity | 8,159 | 8,075 | | | | | 8,254 | 8,073 | |
| of which Group's net interest | 7,980 | 7,959 | | | | | 8,077 | 7,909 | |
| Debt / Equity ratio | 0.52 | 0.35 | | | | | 0.47 | 0.36 | |

a) Sales revenues reflect the new presentation of trading activities that shows only the "negotiation margin" (net presentation).

b) Includes the upfront payment for the acquisition of the Abu Qir concession (€ 1,011 mln).

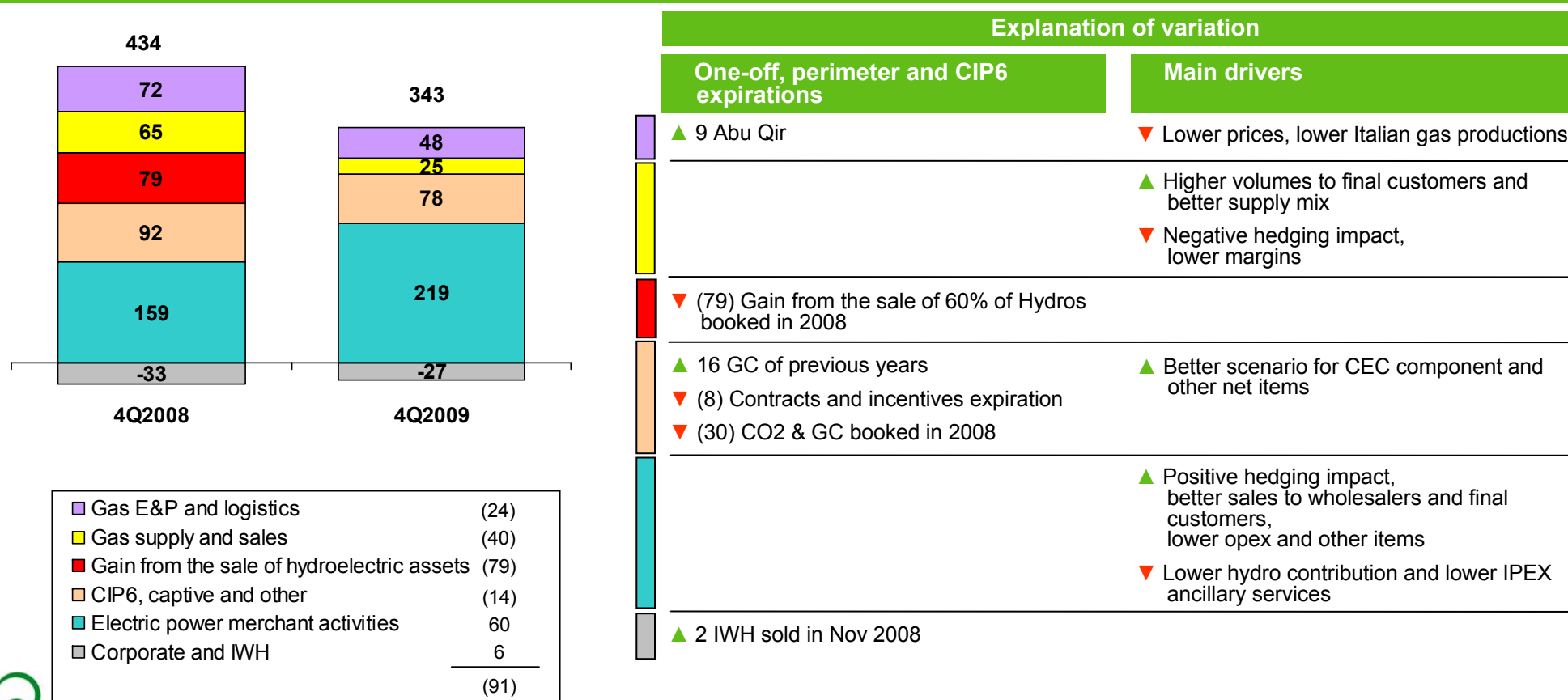
c) Does not include employees in water activity concessions.

OPERATING PERFORMANCE IN THE FOURTH QUARTER

| € mln | Electric Power | | | Hydrocarbons | | | Corporate, adj. and other | | Total Edison Group | | |
|------------------------------|----------------|--------|--------|--------------|--------|--------|---------------------------|--------|--------------------|--------|--------|
| | 4Q2009 | 4Q2008 | %Δ | 4Q2009 | 4Q2008 | %Δ | 4Q2009 | 4Q2008 | 4Q2009 | 4Q2008 | %Δ |
| Sales revenues ^{a)} | 1,639 | 2,024 | (19.0) | 1,156 | 1,623 | (28.8) | (429) | (773) | 2,366 | 2,874 | (17.7) |
| EBITDA | 297 | 330 | (10.0) | 73 | 137 | (46.7) | (27) | (33) | 343 | 434 | (21.0) |

a) Sales revenues reflect the new presentation of trading activities that shows only the "negotiation margin" (net presentation).

EBITDA breakdown (€ mln)

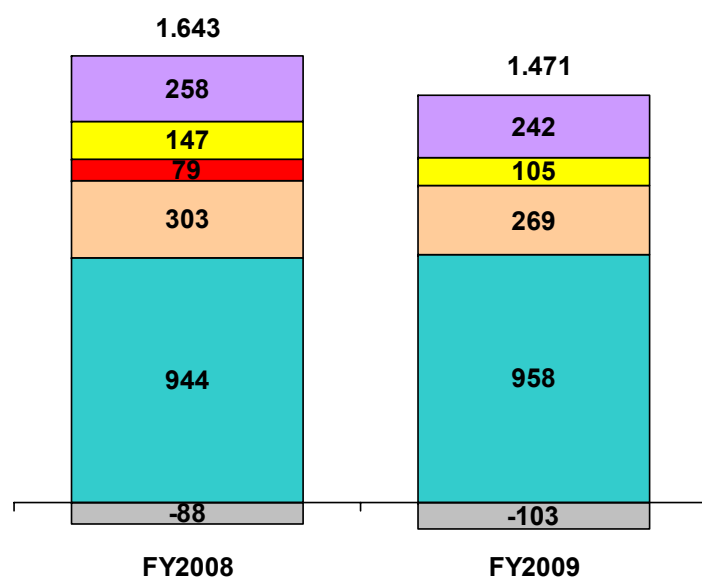


OPERATING PERFORMANCE IN FULL YEAR

| € mln | Electric Power | | | Hydrocarbons | | | Corporate, adj. and other | | Total Edison Group | | |
|-------------------|----------------|--------|--------|--------------|--------|--------|---------------------------|---------|--------------------|--------|--------|
| | FY2009 | FY2008 | %Δ | FY2009 | FY2008 | %Δ | FY2009 | FY2008 | FY2009 | FY2008 | %Δ |
| Sales revenues a) | 6,463 | 7,687 | (15.9) | 4,158 | 5,093 | (18.4) | (1,754) | (2,716) | 8,867 | 10,064 | (11.9) |
| EBITDA | 1,227 | 1,326 | (7.5) | 347 | 405 | (14.3) | (103) | (88) | 1,471 | 1,643 | (10.5) |

a) Sales revenues reflect the new presentation of trading activities that shows only the "negotiation margin" (net presentation).

EBITDA breakdown (€ mln)



| | |
|--|-------|
| Gas E&P and logistics | (16) |
| Gas supply and sales | (42) |
| Gain from the sale of hydroelectric assets | (79) |
| CIP6, captive and other | (34) |
| Electric power merchant activities | 14 |
| Corporate and IWH | (15) |
| | <hr/> |
| | (172) |

Explanation of variation

One-off, perimeter and CIP6 expirations

- ▲ 49 Abu Qir
- ▼ (32) Promgas renegotiation booked in 2008
- ▼ (79) Gain from the sale of 60% of Hydros booked in 2008
- ▲ 25 GC of previous years
- ▼ (41) Contracts and incentives expiration
- ▼ (11) Plants sold in April 2008
- ▼ (81) CO2 & GC booked in 2008

Main drivers

- ▲ Rosetta improvements, better logistics, lower maintenance
- ▼ Lower prices, lower Italian gas productions
- ▲ Higher volumes to final customers and better supply mix
- ▼ Negative hedging impact, lower margins
- ▲ Better scenario for CEC component, better captive
- ▲ 21 Liquidated damages in 2009
- ▲ 16 CCT '04 booked in 2008
- ▲ Positive hedging impact, better sales to wholesalers and final customers
- ▼ Lower thermo productions, lower hydro contribution, lower IPEX ancillary services and other items
- ▼ (5) IWH sold in Nov 2008

EDISON GROUP — FROM EBITDA TO NET INCOME

| <i>Euro million</i> | 4Q2009 | 4Q2008 | Δ | FY2009 | FY2008 | Δ |
|--|------------|------------------|--------------|---------------------|---------------------|--------------|
| EBITDA | 343 | 434 | (91) | 1,471 | 1,643 | (172) |
| Depreciation, amortization and writedowns | (206) | (246) | 40 | (772) | (782) | 10 |
| EBIT | 137 | 188 | (51) | 699 | 861 | (162) |
| Net financial income (expense) | (39) | 4 ^{a)} | (43) | (156) | (100) | (56) |
| Income (expense) on equity investments & other | (17) | 12 ^{b)} | (29) | (14) | (31) | 17 |
| Profit before taxes | 81 | 204 | (123) | 529 | 730 | (201) |
| Income taxes | (45) | (80) | 35 | (278) ^{c)} | (379) ^{d)} | 101 |
| Profit from continuing operations | 36 | 124 | (88) | 251 | 351 | (100) |
| Profit (loss) from discontinued operations | - | - | - | - | (4) | 4 |
| Net income | 36 | 124 | (88) | 251 | 347 | (96) |
| Minority (income) loss | 1 | 3 | (2) | (11) | (1) | (10) |
| Group interest in net income | 37 | 127 | (90) | 240 | 346 | (106) |

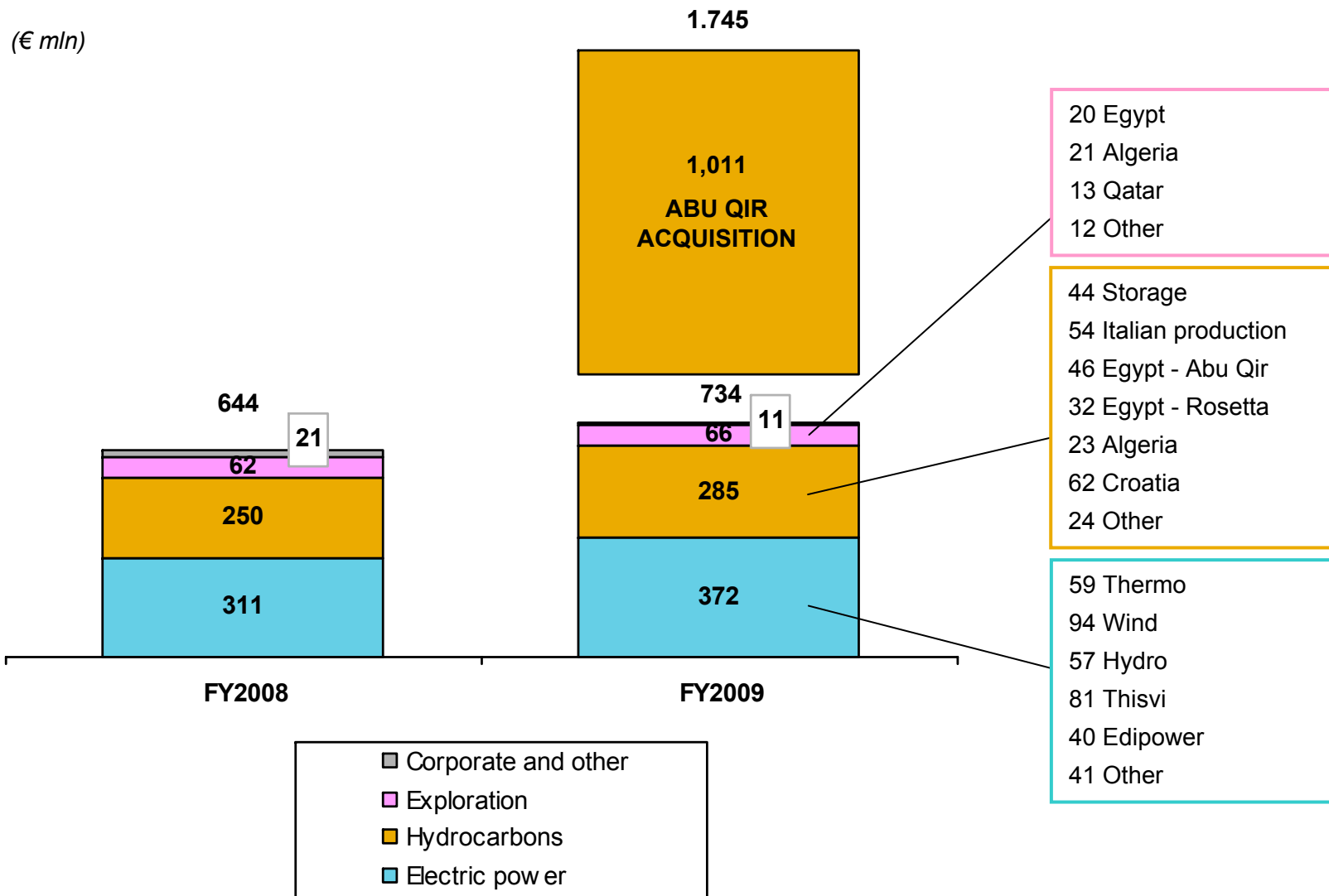
a) Includes non recurrent financial positive items for around 40 million.

b) Mainly represented by the reversal in earnings of existing provisions set aside in previous years.

c) Of which 19 million (11 for deferred taxes, 8 for current taxes) related to the increase of the so called "Robin Hood Tax" from 5.5% to 6.5% (Law n. 99/2009).

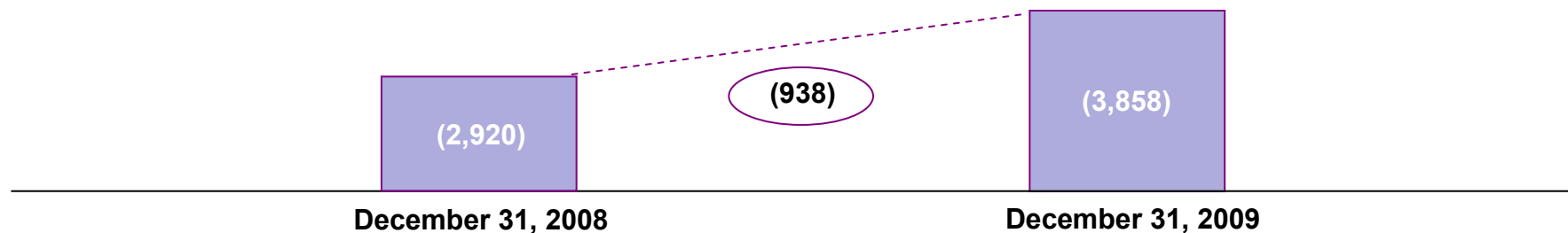
d) Of which 90 million for deferred taxes (70 million related to the so called "Robin Hood Tax" and 20 million related to the Decree 185/08).

CAPITAL EXPENDITURES AND EXPLORATION

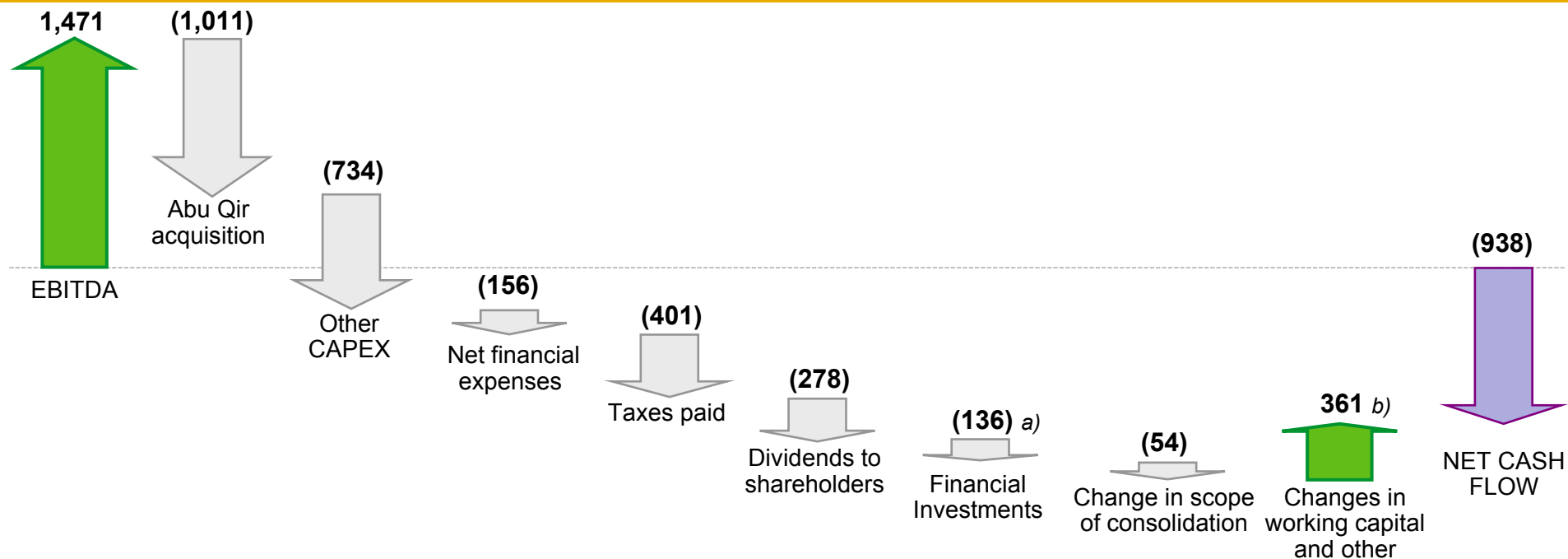


NET FINANCIAL POSITION AND CASH FLOW

Net Financial Position (€ mln)



2009 Cash Flow (€ mln)



a) Of which € 55 mln cash payment as balance of assets conferred in Elpedison, € 25 mln acquisition of 80% of AMG Gas, € 54 mln financial investment in Adriatic LNG, € 2 mln in Galsi.

b) Of which € 274 mln represented by improvement in working capital.

AGENDA

- **Business environment**

- **Fourth quarter and full year 2009 results:**
 - Electric power and hydrocarbons sources and uses
 - Consolidated financial highlights
 - Operating performance
 - Capital expenditures
 - Net financial position and cash flow

- **Dividends**

DIVIDENDS

| | 2009 (proposed to Shareholders' Meeting) | 2008 |
|--|---|--------------------------------------|
| Ordinary shares (€ cent per share) | 4.25 | 5.00 |
| Savings shares (€ cent per share) | 7.25 | 8.00 |
| Coupon presentation date: Payment date: | April 12th, 2010 April 15th, 2010 | April 14th, 2009 April 17th, 2009 |

DISCLAIMER

This document was prepared by Edison mainly for use during meetings with investors and financial analysts.

This document does not constitute an offer to sell or a solicitation to buy or subscribe shares and neither this entire document or a portion of it may constitute a basis or provide a reference for any contract or commitment.

Some of the information contained in this document may contain projected data or estimates that are based on current expectations and on opinions developed by the Company and are based on current plans, estimates, projections and projects. Consequently, it is recommended that they be viewed as indicative only.

Projected data and estimates entail risks and uncertainties. There are a number of factors that could produce significant differences between projected results and actual results. In addition, results may be affected by trends that are often difficult to anticipate, are generally beyond Edison's control and could produce results and developments that are substantially different from those explicitly or implicitly described or computed in the abovementioned projected data and estimates. The non-exhaustive list that follows being provided merely by way of example, these risks include: significant changes in the global business scenario; fluctuations in the prices of certain commodities, such as electric power, natural gas and coal; and changes in the market's competitive conditions and in the general regulatory framework.

Notice is also given that projected data are valid only on the date they are produced. Except for those cases in which the applicable statutes require otherwise, Edison assumes no obligation to provide updates of the abovementioned estimates and projected data.

STATEMENT

As required by Article 154-bis, Section 2, of the Uniform Finance Law (Legislative Decree No 58/1998), Marco Andreasi, in his capacity as "Dirigente preposto alla redazione dei documenti contabili societari" of Edison S.p.A., attests that the accounting information contained in this presentation is consistent with the data in the Company's documents, accounting records and other records.